

Journey to Discipleship

We are pleased to share this newest iteration of our Long Range Plan with our parish. We've accomplished some of our goals, we've combined a few and postponed one. The new goals are listed on the back page with a few objectives for each one. Setting goals with specific, measurable, achievable, realistic and time-sensitive (SMART) objectives is an important step in helping to move forward as a community of faith.

As you can see on the organizational structure of the living tree of Assumption parish (inside), we are rooted in Christ, the scripture and tradition of our Church and are all connected to one another through Christ. As Jesus said, "I am the vine and you are the branches." We live in Christ and do His work here in our little corner of the world. This plan helps us set the course for the future as a parish. Thank you for joining us on the journey.

Our Mission

Mary's Assumption into Heaven is our hope.
We, the Church of the Assumption, are called to follow Jesus according to Mary's example as a beacon of hope and light for all.

Our Vision

By engaging in formation, sacraments, outreach and stewardship,
we will glorify the Lord with our lives.

Vision 2020 Goals for our Journey to Discipleship

Goal A: Invite non-believers and non-practicing Catholics

- Empower parishioners to become evangelists
- Adopt/implement *Awakening Faith* program (Easter 2018 & January 2019)
- Adopt/implement *Seeking Christ* program (Fall 2018)

Goal B: Deepen spiritual foundations through a variety of programs

- Conduct biennial adult offsite one-day retreats (offered in 2017)
- Conduct married couples retreat at five-year intervals (Fall 2019)
- Promote *Formed.org*
- Support biennial Lenten Mission

Goal C: Promote intentional discipleship as a lifelong journey

- Form the implementation team (July 2019 Colorado)
- Introduce program to parish community (Parish Mission, Lent 2020)
- Implement *Called and Gifted* discernment process (possibly in Fall 2020)

Goal D: Provide opportunities for small group faith formation

- Establish committee for small group support
- Develop website link for small group resources
- Develop guidelines for small group creation
- Identify faith formation and spiritual growth programs
- Select and implement Lenten small group programs
- Implement a small group leadership training program
- Conduct annual survey to evaluate effectiveness

Goal E: Incorporate Family Promise into the Life of the Parish

- Host families experiencing homelessness in our facility four times a year, when school is not in session

- Maintain a sufficient roster of trained volunteers to do the work of feeding and housing our guests
- Provide a safe, comfortable space for families to stay while doing the work to become self-sufficient
- Coordinate with other faith communities to ensure a successful program in Whatcom County

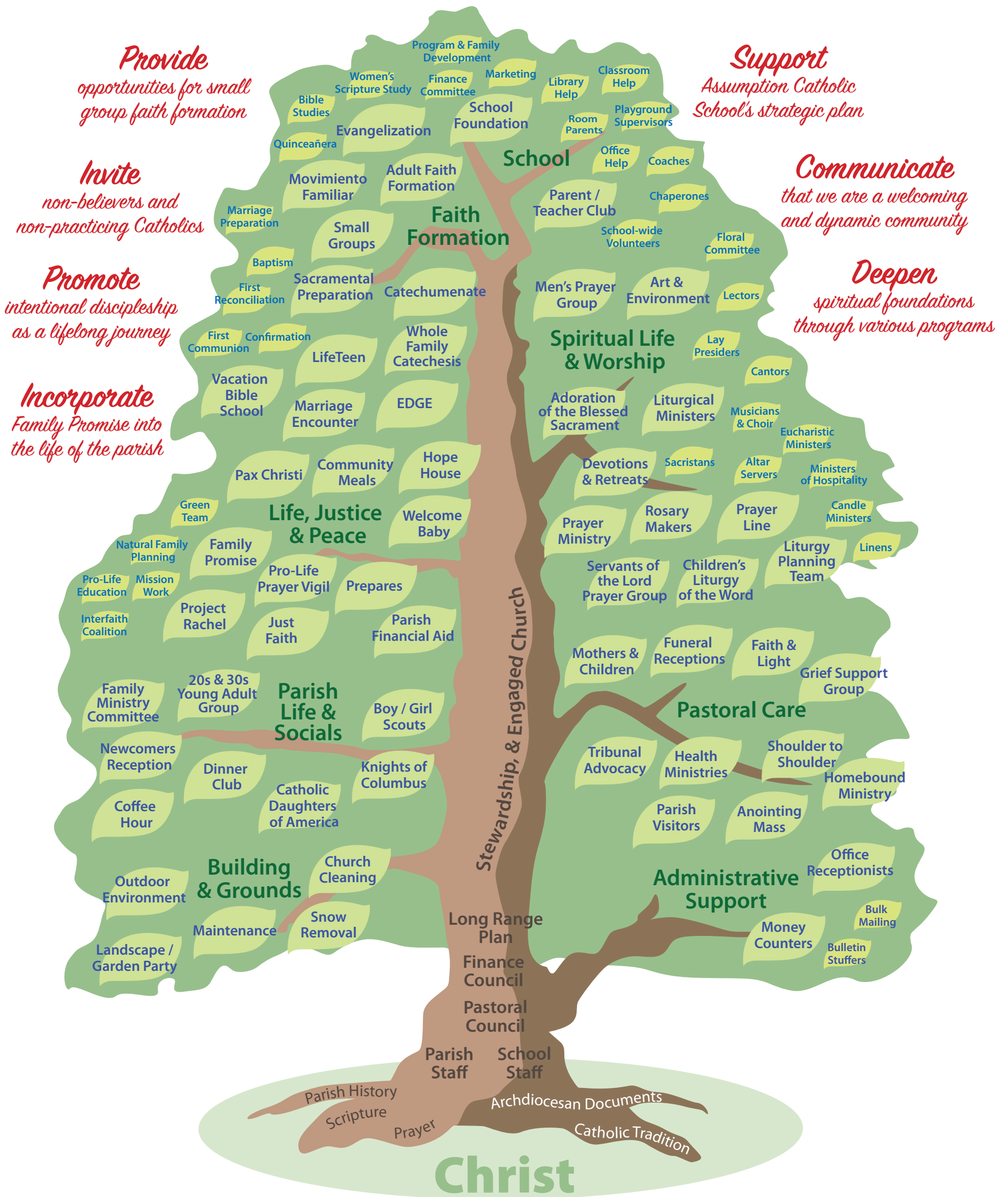
Goal F: Communicate that we are a welcoming and dynamic community

- Offer an annual ministry fair (every September)
- Publish a quarterly Parish newsletter
- Improve ministry information available on the Parish website.
- Establish and maintain an active Parish presence on social media platforms.
- Make recommendations for deeper levels of individual service (using survey results from Summer 2018)
- Connect those with needs to various volunteer services (after survey and ministry fair)
- Implement *Sign-up Genius* as a tool to support a volunteer/need clearing house

Goal G: Assumption Parish will support the Assumption Catholic School strategic plan

- Integrate Catholic teachings into all curriculum areas and strengthen the relationship between the school and Whatcom County parishes
- Create a marketing plan to appeal to new families and find ways to manage attrition in the upper grades
- Assumption Catholic School will practice wise stewardship
- Develop excellent curricula, teachers, and school leaders through ongoing, research-based professional development
- Create a working master facilities plan in coordination with the Church of the Assumption

Vision 2020 Goals



CHURCH OF THE ASSUMPTION

Organizational Structure

The goals listed in red around the tree represent fruits of the Church of the Assumption. We are a living being as a parish community and we hope to find a place for each person and every ministry within our parish community.